

ALLEGRO ♩ = 112

CL  
14Bb

VCL

PIE

CL

VCL

CL

VCL

This is a handwritten musical score for a Clarinet (CL) and Violin (VCL) ensemble. The score is organized into three systems, each containing staves for the Clarinet, Violin, and Piano (PIE). The tempo is marked 'ALLEGRO' with a quarter note equal to 112 beats per minute. The key signature is B-flat major (two flats) and the time signature is 3/4. The first system includes dynamic markings such as 'f' (forte) and 'Pizz.' (pizzicato), along with various articulation marks like accents and slurs. The second system continues the musical development with similar notation. The third system concludes the piece with a final cadence. The handwriting is clear and professional, with some corrections and annotations visible throughout the score.

CL. *mf*

VCL. *mf*

CL

VCL

CL *mf*

VCL

3.

Handwritten musical score for the first system. It consists of a treble staff and a bass staff. The treble staff begins with a treble clef, a key signature of one sharp (F#), and a common time signature (C). The first measure contains a half note F#4. The second measure contains a quarter note G4, a quarter note A4, and a quarter note B4. The third measure contains a quarter note C5, a quarter note B4, and a quarter note A4. The fourth measure contains a quarter note G4, a quarter note F#4, and a quarter note E4. The fifth measure contains a quarter note D4, a quarter note C4, and a quarter note B3. The sixth measure contains a quarter note A3, a quarter note G3, and a quarter note F#3. The seventh measure contains a quarter note E3, a quarter note D3, and a quarter note C3. The eighth measure contains a quarter note B2, a quarter note A2, and a quarter note G2. The ninth measure contains a quarter note F#2, a quarter note E2, and a quarter note D2. The tenth measure contains a quarter note C2, a quarter note B1, and a quarter note A1. The piano accompaniment is written in the bass staff, starting with a bass clef and a common time signature. It features a steady eighth-note accompaniment in the left hand and a more melodic line in the right hand. The dynamic marking *mf* is present in both staves.

Handwritten musical score for the second system. It consists of a treble staff and a bass staff. The treble staff continues the melody from the first system, with notes F#4, G4, A4, B4, C5, B4, A4, G4, F#4, E4, D4, C4, B3, A3, G3, F#3, E3, D3, C3, B2, A2, G2, F#2, E2, D2, C2, B1, A1. The piano accompaniment continues with a steady eighth-note accompaniment in the left hand and a more melodic line in the right hand. The dynamic marking *mf* is present in both staves.

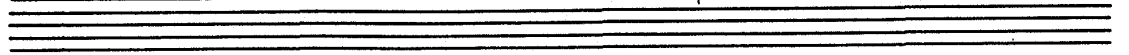
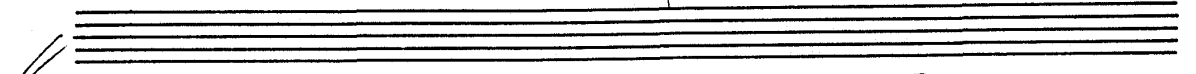
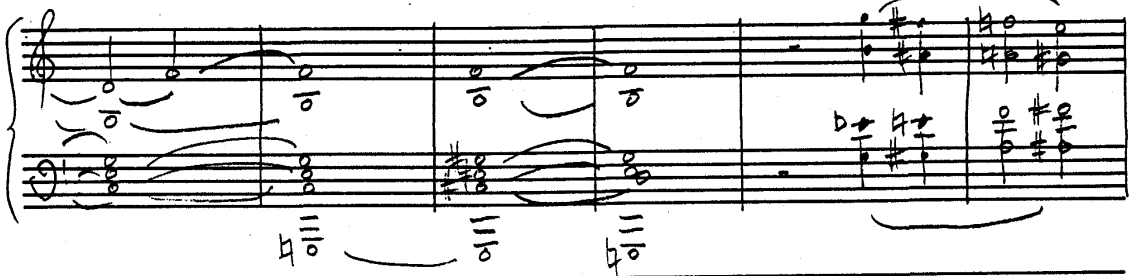
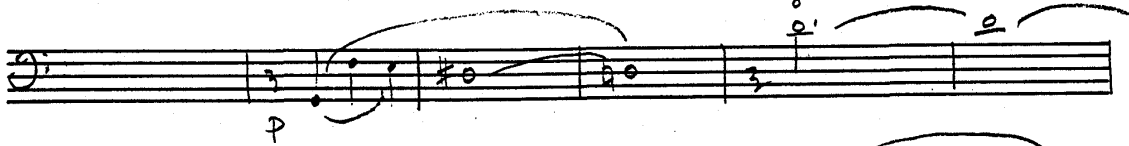
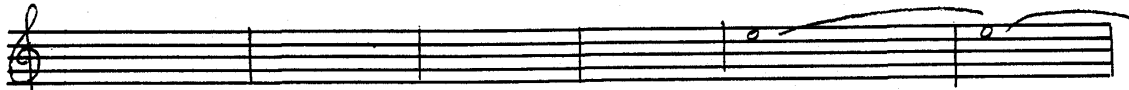
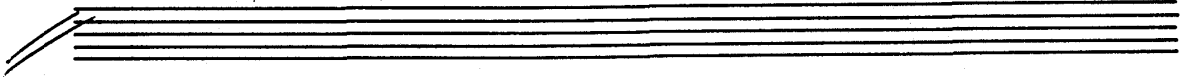
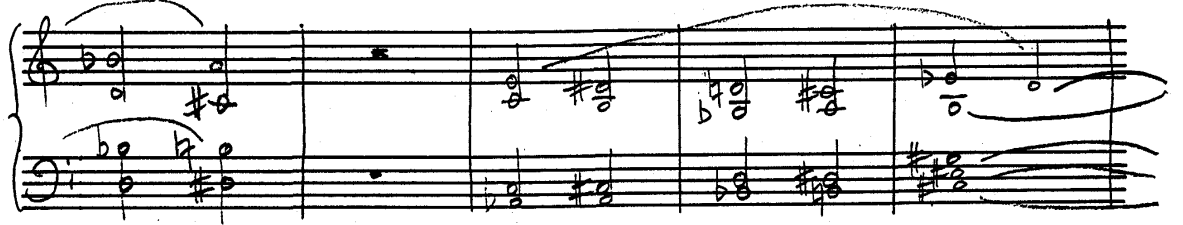
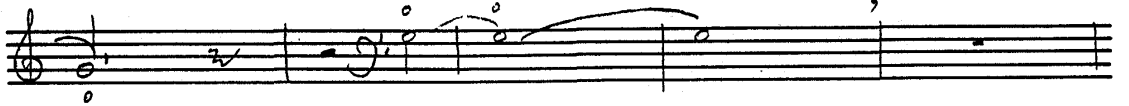
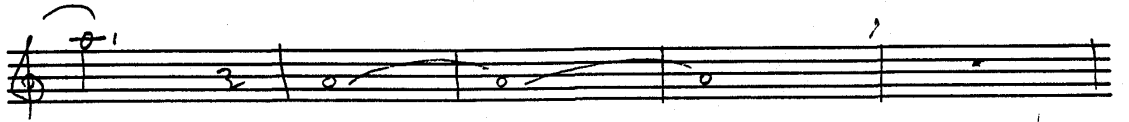
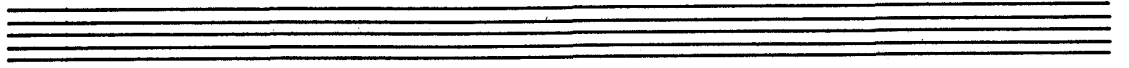
Handwritten musical score for the third system. It consists of a treble staff and a bass staff. The treble staff continues the melody from the second system, with notes F#4, G4, A4, B4, C5, B4, A4, G4, F#4, E4, D4, C4, B3, A3, G3, F#3, E3, D3, C3, B2, A2, G2, F#2, E2, D2, C2, B1, A1. The piano accompaniment continues with a steady eighth-note accompaniment in the left hand and a more melodic line in the right hand. The dynamic marking *mf* is present in both staves.


Handwritten musical notation for the first system, consisting of two staves with treble and bass clefs. The music features melodic lines with slurs and ties, and some chromatic movement.

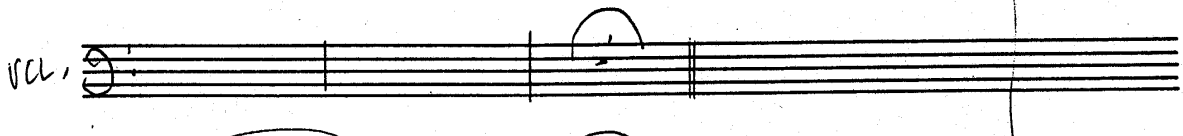
Handwritten musical notation for the second system, consisting of two staves with treble and bass clefs. The music features a more complex texture with many beamed notes and slurs.


Handwritten musical notation for the third system, consisting of four staves with treble and bass clefs. The music features a complex texture with many beamed notes and slurs. A "Pizz." marking is present in the second staff.

Handwritten musical notation for the fourth system, consisting of four staves with treble and bass clefs. The music features a complex texture with many beamed notes and slurs. A "P" marking is present in the first staff, and "Arco" and "C. P" markings are present in the second and third staves.



CL. 

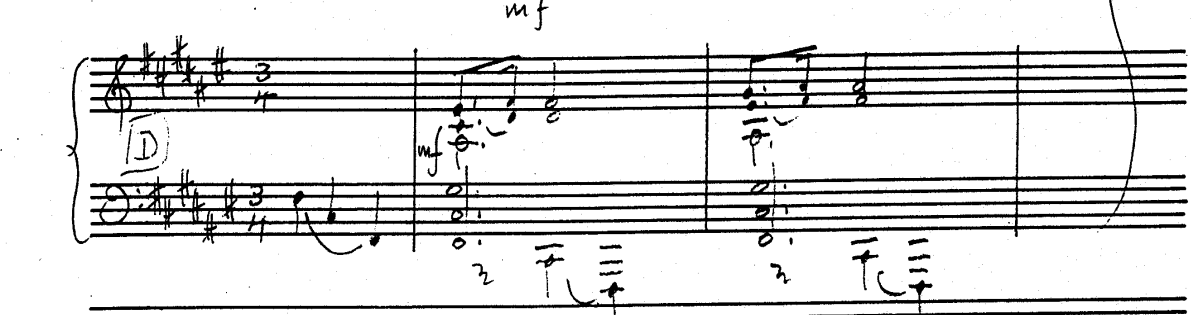
VCL. 

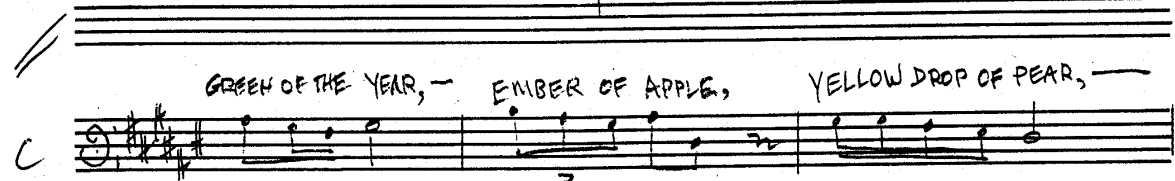


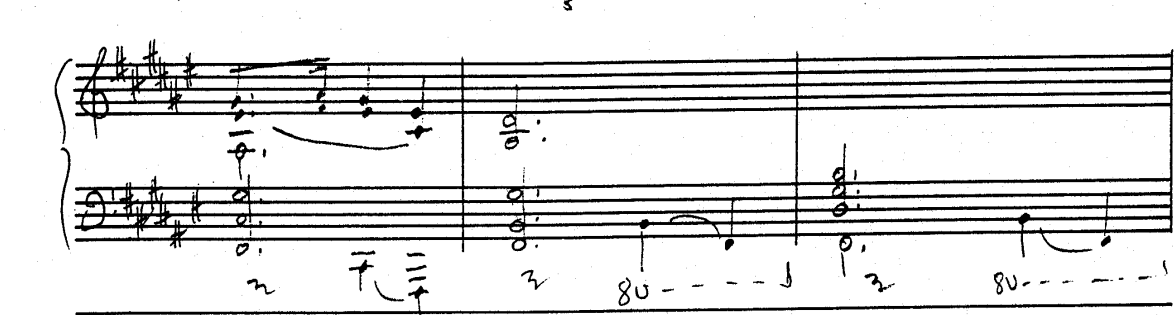
**d = bb ANDANTE**

CYRIL 

*mf*



C 



C 



NECRITA *THE MOWER*

CYRIL *BURNING UPON HER HAIR?*

N *MOVES ON THE MEADOW HOW STRONG HIS ARM! HOW HUGE HIS SHADOW!*

CYRIL *INDIGO OF OBLIVION TAWNY FIELDS OF THE LION GATHERING FEVER AND REARING*

**ALLEGRO** MY LOVE IS A BLACK  
 BIANCA **mf**

TORN BY THE FANG OF THE THUNDER.

C. **ALLEGRO**  
 CL. **mp**  
 UCL. **ALLEGRO**  
 PIANO **mp**

PLUM, DOES SHE NO LONGER NEED ME?  
 B

CL. **f**

UL. **f**

PIANO **f**

Empty musical staves for continuation of the score.