

Ave Verum Corpus

Bryony Phillips

Flowing and passionate

Counter Tenor

Ma...ri...a

Tenors

Su-ffer-ing

Suffering

Baritone

Pa---

Bass

Flu-xit san-guine. Flu-xit san-guine.

* 'san' should be hit with a harsh quality of voice whilst the rest of the phrase should be sung with a more normal cantabile quality.

o Je-----su A-----ve

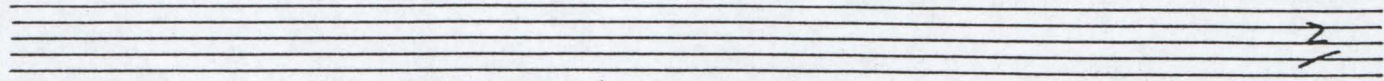
A---

on the first syllable).

Flu-xit san-guine. Flu-xit san-guine. Flu-xit san-guine.

Bryony Phillips

Dunedin, AUCKLAND 4



$f > mp$ $mf > p$ $mp > pp$
 A-----ve A-----ve A-----ve
 -----ve ve-----rum cor-----pus na-----tum de Ma--
 (Continue whispering, over and over again)
 she suffers. suffering

$>f > mp$ Normale
 pa-----ssum
 flu--xit san-gui-ne. flu--xit san-gui-ne. flu--xit san-gui-ne.

$mf < f > mp$
 Ma-ri--a.
 ri-----a vir-----gi-ne:

mf pp bp $b, +$
 ve-----re pa-----ssum, in-mo-----
 flu--xit san-gui-ne. flu--xit san-gui-ne. flu--xit san-gui-ne.