

EMILY DICKINSON
TEXT:

RHYTHMIC
APPROXIMATION:

PITCH
APPROXIMATION:

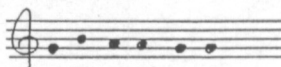
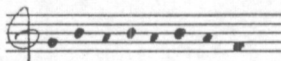
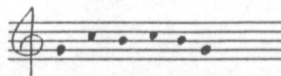
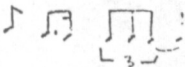
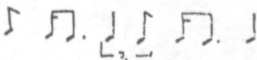
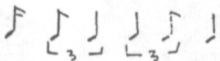
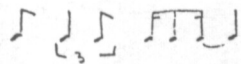
PERFORMANCE
OUTLINE:

The Heart has narrow
Banks

It measures like the Sea

In mighty - unremitting
Bass

And Blue Monotony



[digital delay & video ON]

clap 1st verse rhythm
[jerky zoom in/out text,
B&W animated
pulsing heart; digital delay
HOLD]

**rhythm&pitch low
register clarinet**
[color photo hearts in
increasingly rapid
alternation w/ B&W]

**alternate cl. registers
at will, slowly build
"chord clouds", accel.
w/ images.**

[follow video for
text/rhythm/pitch group
shifts]