

for Waitomo Caves Choir
conductor: Martha Ash

The Cruiser

SATB unaccompanied

music: David Hamilton (2008)

text: Will Lawson

♩ = 126-132 With strong rhythm - like a sea shanty

All
Voices



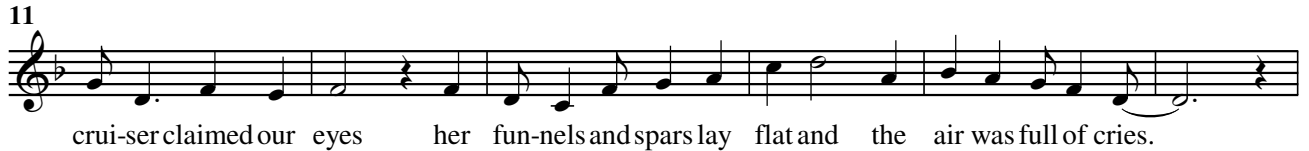
6

All.



11

All.



17

S.



A.



T.



B.



Pno.



23

S. lost in a mad-man's mood, search-ing the ro- sy tide. *mf* The smoke from the splin-tered

A. *p* oo- search-ing the ro- sy tide. *mf* The smoke from the splin-tered

T. *p* oo- search-ing the ro- sy tide. *mf* The smoke from the splin-tered

B. *p* oo- search-ing the ro- sy tide. *mf* The smoke from the splin-tered

Pno. *p* *mf*

28

S. stacks rolled o-ver her decks in clouds. In her ar-mor were rents and cracks in the

A. stacks, from the stacks rolled in clouds, In her ar-mor were rents and cracks in the

T. stacks, from the stacks rolled in clouds, In her ar-mor were rents and cracks in the

B. stacks, from the stacks rolled in clouds, In her ar-mor were rents and cracks in the

Pno.